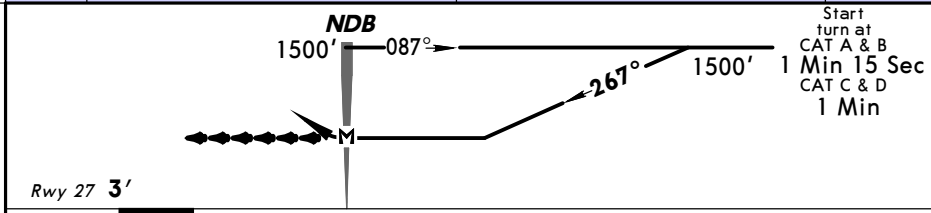
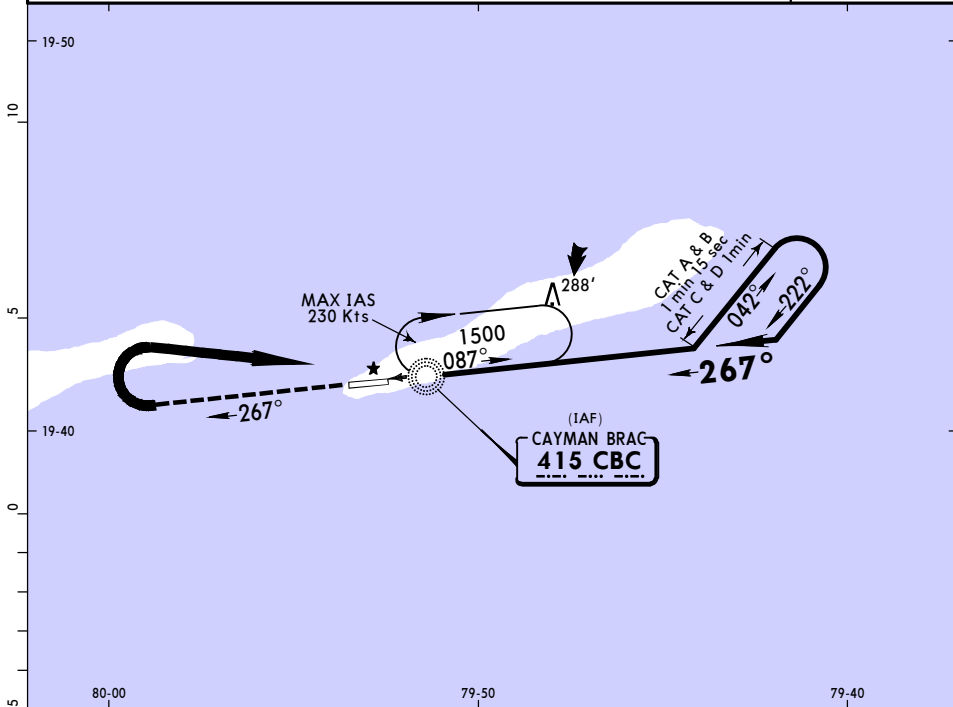


*CAYMAN Approach			*BRAC Tower		
120.2			118.4		
NDB CBC 415	Final Apch Crs 267°	No FAF	MDA(H) 520' (517')	Apt Elev 4' Rwy 27 3'	1300' MSA CBC NDB
MISSED APCH: Climb straight ahead to 1500', turn RIGHT direct CBC NDB and hold.					
Alt Set: hPa (IN on req) Rwy Elev: 0 hPa Trans level: FL 180 Trans alt: 17000' 1. IFR and VFR aircraft operations in excess of 250 Kts IAS below 10500', are not permitted within the Cayman Islands TMA and Kirkconnell CTR.					



REIL	1500'	RT	CBC
PAPI-L	↑	→	415
MAP at NDB			

STRAIGHT-IN LANDING RWY 27		CIRCLE-TO-LAND	
MDA(H) 520' (517')		MDA(H)	
A	1600m	Max Kts 100	520' (516')-1600m
B		135	
C	2400m	180	600' (596')-2400m
D	2800m	205	700' (696')-3600m

PANS OPS