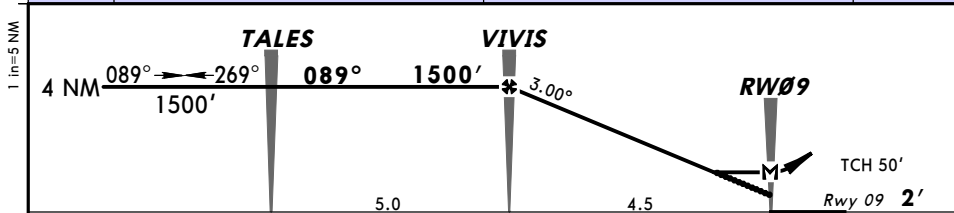
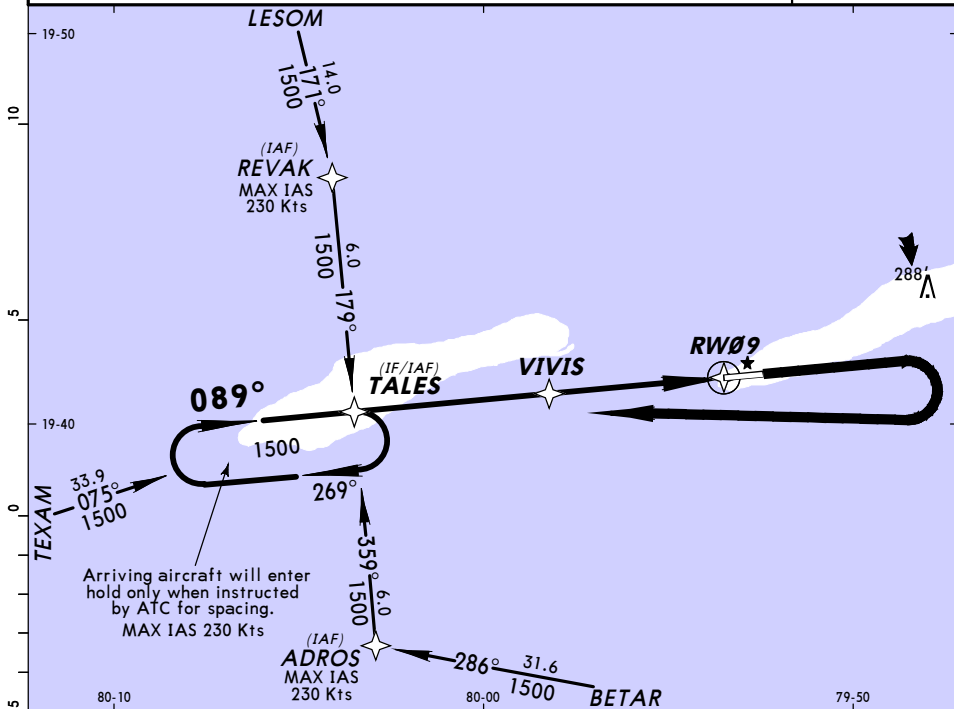


*CAYMAN Approach 120.2			*BRAC Tower 118.4		
RNAV	Final Apch Crs 089°	Minimum Alt VIVIS 1500' (1498')	MDA(H) Refer to Minimums	Apt Elev 4' Rwy 09 2'	1300' MSA ARP
MISSED APCH: Climb straight ahead to 1500', turn RIGHT direct TALEs and hold.					
Alt Set: hPa (IN on req) Rwy Elev: 0 hPa Trans level: FL 180 Trans alt: 17000' 1. IFR and VFR aircraft operations in excess of 250 Kts IAS below 10500' are not permitted within the Cayman Islands TMA and Kirkconnell CTR.					



Gnd speed-Kts	70	90	100	120	140	160	REIL PAPI-L	1500'	RT	D	TALES
Descent Angle	3.00°	372	478	531	637	849		↑			
MAP at RWY09											

STRAIGHT-IN LANDING RWY 09 LNAV						CIRCLE-TO-LAND					
MDA(H) A: 460' (458') C: 600' (598') B: 500' (498') D: 700' (698')						Max Kts					
A	1600m					100	460' (456') - 1600m				
B	2400m					135	500' (496') - 1600m				
C	3600m					180	600' (596') - 2400m				
D						205	700' (696') - 3600m				

PANS OPS