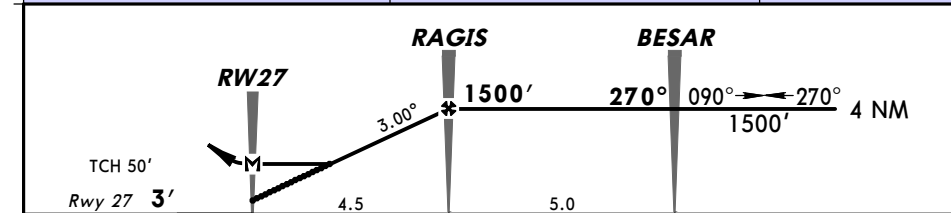
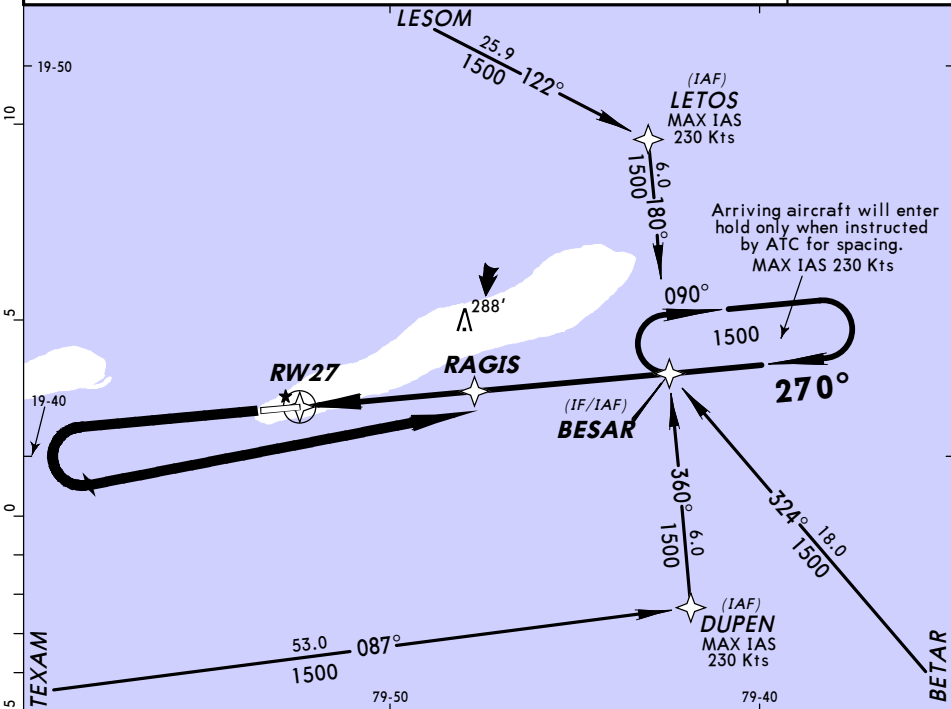


*CAYMAN Approach 120.2			*BRAC Tower 118.4		
RNAV	Final Apch Crs 270°	Minimum Alt RAGIS 1500' (1497')	MDA(H) Refer to Minimums	Apt Elev 4' Rwy 27 3'	1300' MSA ARP
MISSED APCH: Climb straight ahead to 1500', turn LEFT direct BESAR and hold.					
Alt Set: hPa (IN on req) Rwy Elev: 0 hPa Trans level: FL 180 Trans alt: 17000' 1. IFR and VFR aircraft operations in excess of 250 Kts IAS below 10500' are not permitted within the Cayman Islands TMA and Kirkconnell CTR.					



Gnd speed-Kts	70	90	100	120	140	160	REIL PAPI-L	1500'	LT	D	BESAR
Descent Angle	3.00°	372	478	531	637	849		↑			
MAP at Rwy27											

STRAIGHT-IN LANDING RWY 27 LNAV		CIRCLE-TO-LAND	
MDA(H) A: 460' (457') C: 600' (597') B: 500' (497') D: 700' (697')			
A	1600m	Max Kts	100
B		MDA(H)	135
C	2400m		180
D	3600m		205