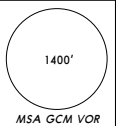


*ATIS
132.35

Apt Elev
8'

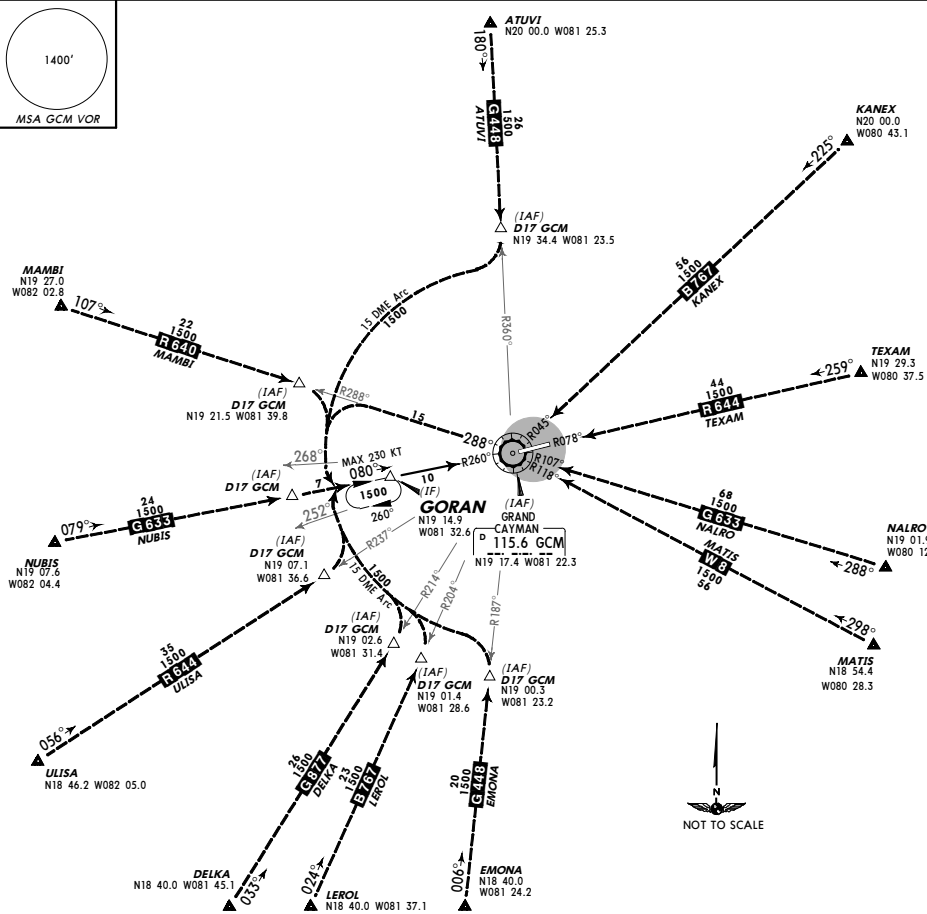
Alt Set: hPa and INCHES Trans level: FL180 Trans alt: 17000'

VOR/DME required.



GORAN THREE ARRIVAL
[GORAN3]

SPEED MAX 250 KT BELOW 10500'



TRANSITIONS	
ATUVI	From ATUVI to GORAN: Via GCM R-360 inbound to D17 GCM, then turn RIGHT via GCM 15 DME Arc and GCM R-260 inbound.
DELKA	From DELKA to GORAN: Via GCM R-214 inbound to D17 GCM, then turn LEFT via GCM 15 DME Arc and GCM R-260 inbound.
EMONA	From EMONA to GORAN: Via GCM R-187 inbound to D17 GCM, then turn LEFT via GCM 15 DME Arc and GCM R-260 inbound.
KANEX	From KANEX to GORAN: Via GCM R-045 inbound to GCM, then via GCM R-288 outbound, then turn LEFT via GCM 15 DME Arc, then turn LEFT via GCM R-260 inbound.
LEROL	From LEROL to GORAN: Via GCM R-204 inbound to D17 GCM, then turn LEFT via GCM 15 DME Arc and GCM R-260 inbound.
MAMBI	From MAMBI to GORAN: Via GCM R-288 inbound to D17 GCM, then turn RIGHT via GCM 15 DME Arc and GCM R-260 inbound.
MATIS	From MATIS to GORAN: Via GCM R-118 inbound to GCM, then via GCM R-288 outbound, then turn LEFT via GCM 15 DME Arc, then turn LEFT via GCM R-260 inbound.
NALRO	From NALRO to GORAN: Via GCM R-107 inbound to GCM, then via GCM R-288 outbound, then turn LEFT via GCM 15 DME Arc, then turn LEFT via GCM R-260 inbound.
NUBIS	From NUBIS to GORAN: Via GCM R-260 inbound to GORAN.
TEXAM	From TEXAM to GORAN: Via GCM R-078 inbound to GCM, then via GCM R-288 outbound, then turn LEFT via GCM 15 DME Arc, then turn LEFT via GCM R-260 inbound.
ULISA	From ULISA to GORAN: Via GCM R-237 inbound to D17 GCM, then turn LEFT via GCM 15 DME Arc and GCM R-260 inbound.

ROUTING	
Hold at GORAN	MAINTAINING ATC assigned altitude unless/until cleared by ATC to execute the VOR DME Rwy 08 approach procedure.

CHANGES: ULISA coordinates.