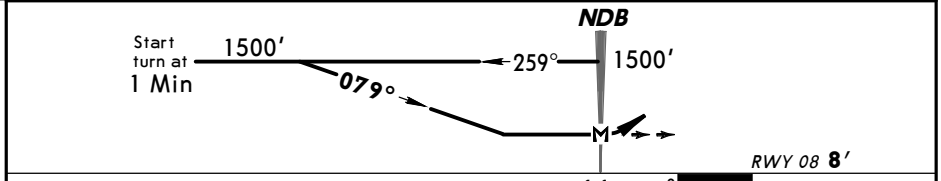
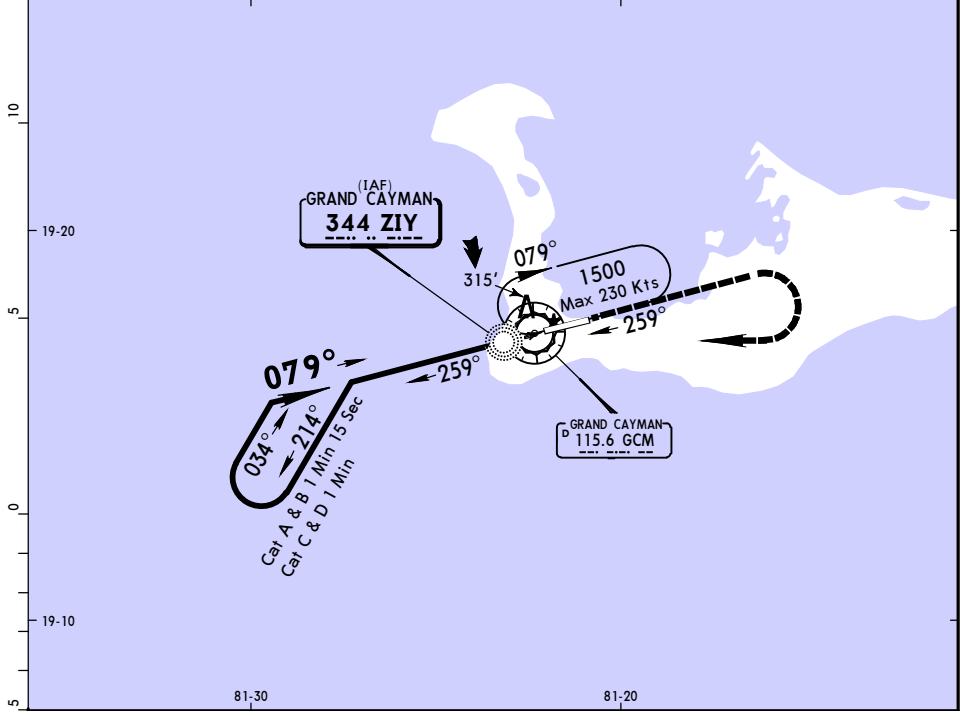


*ATIS 132.35		*GRAND CAYMAN Approach 120.2		*OWEN ROBERTS Tower 118.0	
NDB Ziy 344	Final Apch Crs 079°	No FAF	MDA(H) Refer to Minimums	Apt Elev 8' Rwy 08 8'	1400' MSA Ziy NDB
MISSED APCH: Climb STRAIGHT AHEAD to 1500', turn RIGHT direct Ziy NDB and hold.					
Alt Set: hPa and INCHES TDZ Elev: 0 hPa Trans level: FL 180 Trans alt: 17000' 1. IFR and VFR aircraft operations in excess of 250 KIAS below 10500' are not permitted within the Cayman Islands TMA and Owen Roberts CTR.					



MAP at NDB					ODALS	REIL	PAPI	1500'	RT	Ziy 344
------------	--	--	--	--	-------	------	------	-------	----	---------

STRAIGHT-IN LANDING RWY 08				CIRCLE-TO-LAND			
MDA(H)A/B: 610'(602') C/D: 710'(702')							
		ODALS out		Max Kts	MDA(H)		
A	1600m	1900m		100	610'(602') - 1600m		
B				135			
C	3200m			180	710'(702') - 3200m		
D	3600m			205	710'(702') - 3600m		

PANS OPS