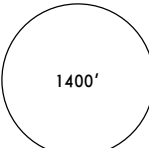
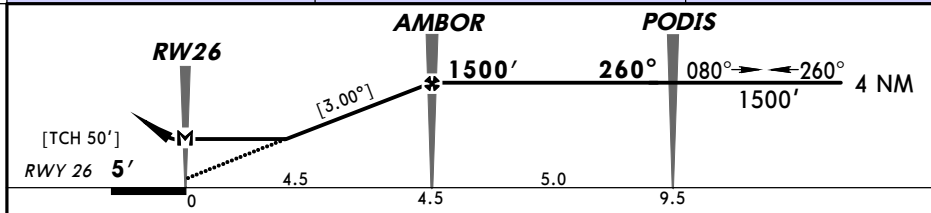
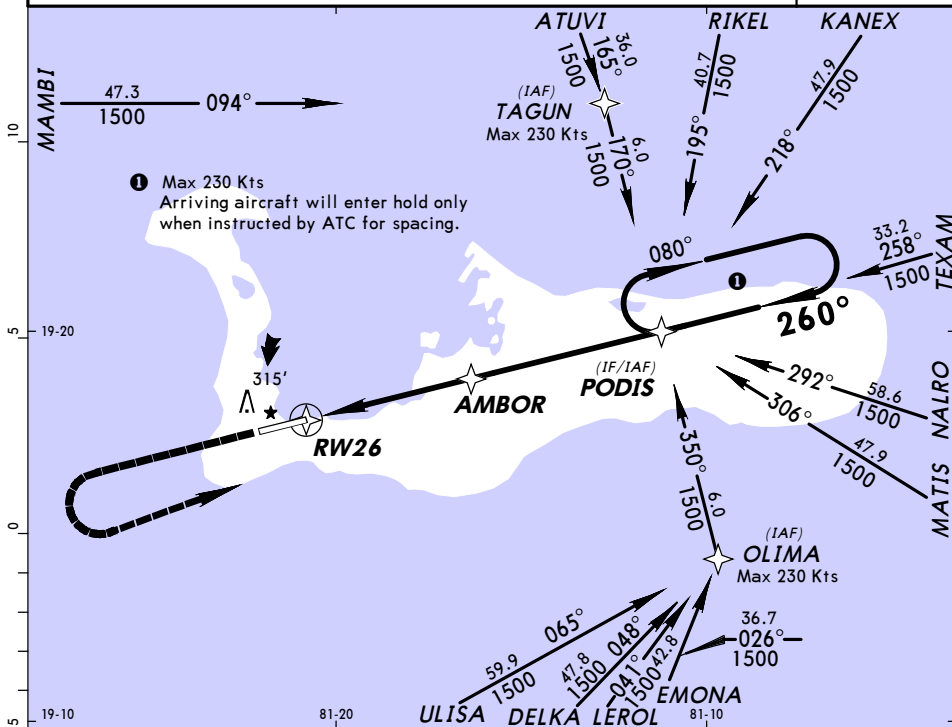




*ATIS 132.35		*GRAND CAYMAN Approach 120.2		*OWEN ROBERTS Tower 118.0	
RNAV	Final ApcH Crs 260°	Minimum Alt AMBOR 1500'(1495')	LNAV MDA(H) Refer to Minimums	Apt Elev 8'	Rwy 26 5'
MISSED APCH: Climb STRAIGHT AHEAD to 1500', turn LEFT direct PODIS and hold.					 MSA ARP
Alt Set: hPa and INCHES TDZ Elev: 0 hPa Trans level: FL 180 Trans alt: 17000' 1. IFR and VFR aircraft operations in excess of 250 KIAS below 10500' are not permitted within the Cayman Islands TMA and Owen Roberts CTR.					



Gnd speed-Kts	70	90	100	120	140	160	REIL PAPI-L   PODIS
Descent Gradient or Descent angle [3.00°]	372	478	531	637	743	849	
MAP at RWY 26							

STRAIGHT-IN LANDING RWY 26			CIRCLE-TO-LAND		
LNAV			MDA(H)		
MDA(H) A/B: 610'(602') C/D: 710'(702')			Max Kts		
A	1600m		100	610'(602') - 1600m	
B			135		
C	3200m		180	710'(702') - 3200m	
D	3600m		205	710'(702') - 3600m	

PANS OPS