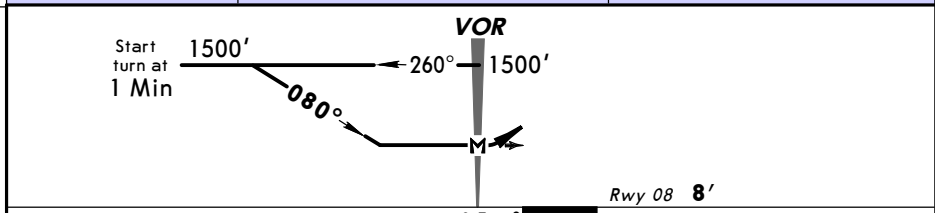
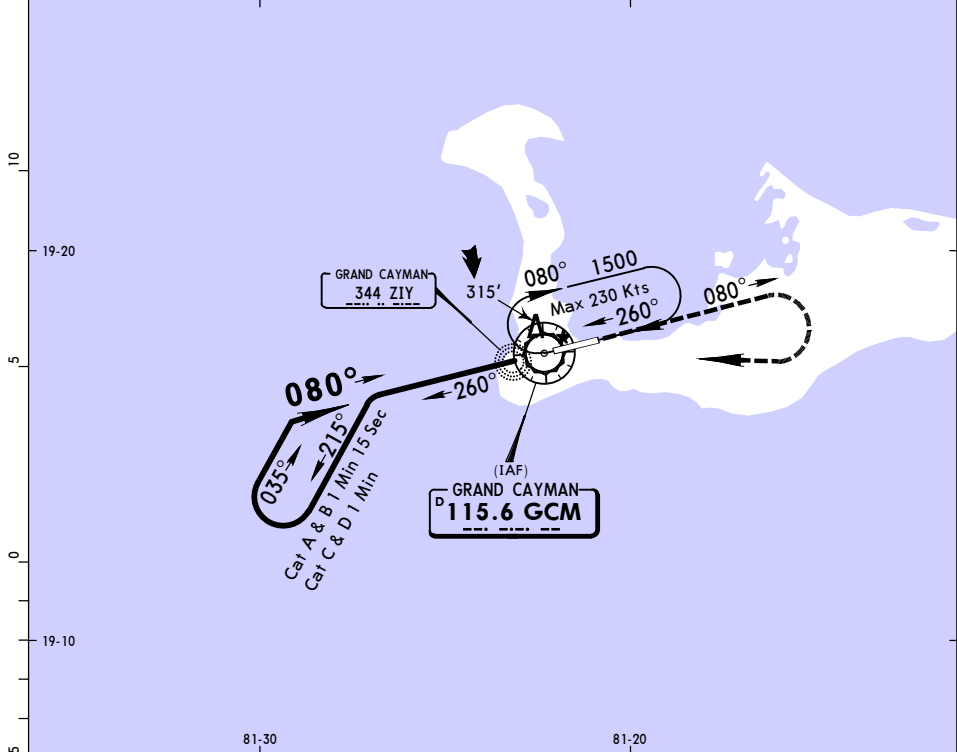


*ATIS 132.35		*GRAND CAYMAN Approach 120.2		*OWEN ROBERTS Tower 118.0	
VOR GCM <b>115.6</b>	Final Apch Crs <b>080°</b>	No FAF	MDA(H) Refer to Minimums	Apt Elev <b>8'</b> Rwy 08 <b>8'</b>	1400'
<b>MISSED APCH: Climb STRAIGHT AHEAD to 1500', turn RIGHT direct to GCM VOR and hold.</b>					
Alt Set: hPa and INCHES    Rwy Elev: 0 hPa    Trans level: FL 180    Trans alt: 17000' 1. IFR and VFR aircraft operations in excess of 250 KIAS below 10500' are not permitted within the Cayman Islands TMA and Owen Roberts CTR.					MSA GCM VOR



MAP at VOR				ODALS	1500'	RT	GCM 115.6
				REIL PAPI	↑	→	→

STRAIGHT-IN LANDING RWY 08			CIRCLE-TO-LAND	
MDA(H) A/B: <b>610'(602')</b> C/D: <b>710'(702')</b>				
ODALS out			Max Kts	MDA(H)
A	1200m	1600m	100	<b>610'(602')</b> -1600m
B	3200m		135	
C	3200m		180	<b>710'(702')</b> -3200m
D	3600m		205	<b>710'(702')</b> -3600m

PANS OPS