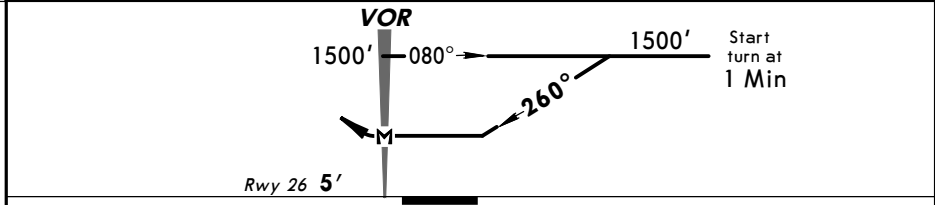
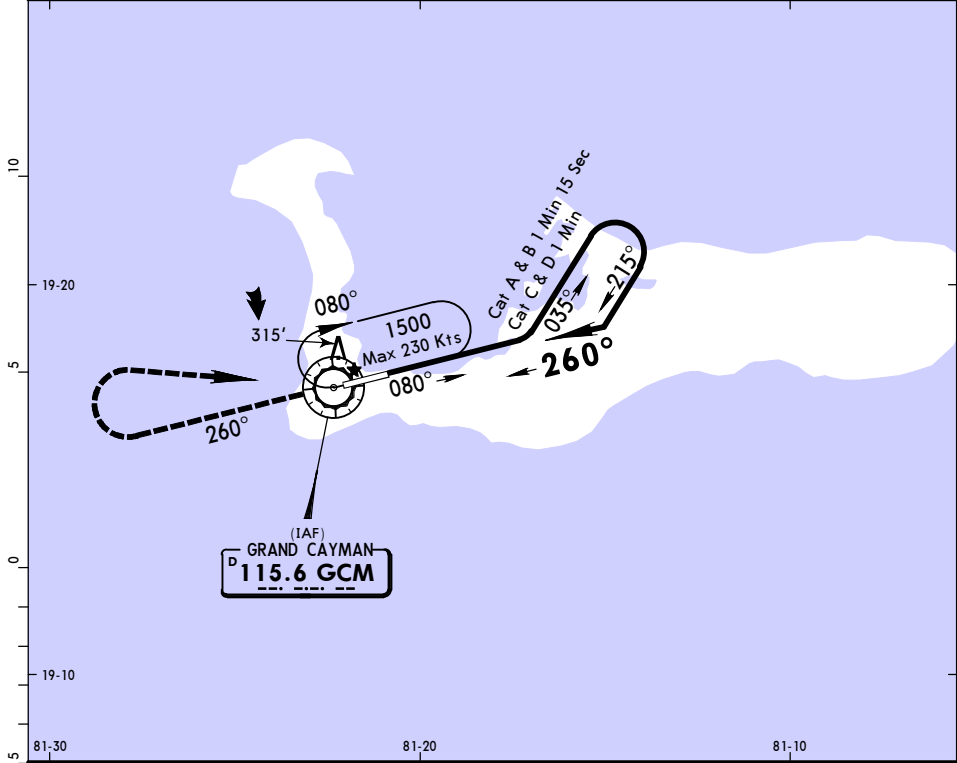


*ATIS 132.35		*GRAND CAYMAN Approach 120.2		*OWEN ROBERTS Tower 118.0	
VOR GCM 115.6	Final Apch Crs 260°	No FAF	MDA(H) Refer to Minimums	Apt Elev 8' Rwy 26 5'	1400'
MISSED APCH: Climb STRAIGHT AHEAD to 1500', turn RIGHT direct to GCM VOR and hold.					
Alt Set: hPa and INCHES Rwy Elev: 0 hPa Trans level: FL 180 Trans alt: 17000' 1. IFR and VFR aircraft operations in excess of 250 KIAS below 10500' are not permitted within the Cayman Islands TMA and Owen Roberts CTR.					MSA GCM VOR



					REIL PAPI-L	1500'	RT	D	GCM 115.6
MAP at VOR									

STRAIGHT-IN LANDING RWY 26				CIRCLE-TO-LAND			
MDA(H) A/B: 610' (602')				C/D: 710' (702')			
				Max Kts	MDA(H)		
A	1600m			100	610' (602') - 1600m		
B	3200m			135	710' (702') - 3200m		
C	3200m			180	710' (702') - 3200m		
D	3600m			205	710' (702') - 3600m		

PANS OPS