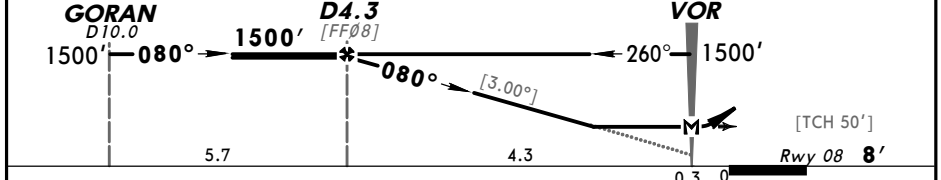
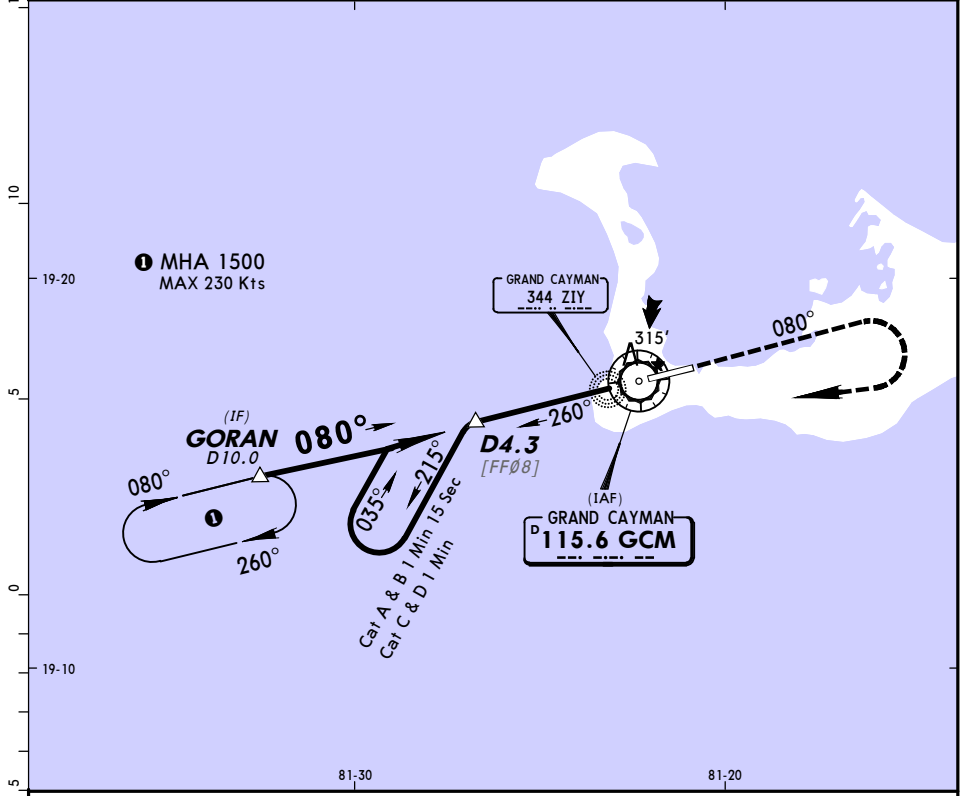


*ATIS 132.35		*GRAND CAYMAN Approach 120.2		*OWEN ROBERTS Tower 118.0	
VOR GCM 115.6	Final Apch Crs 080°	Minimum Alt D4.3 1500' (1492')	MDA(H) Refer to Minimums	Apt Elev Rwy 08 8'	1400' MSA GCM VOR
MISSED APCH: Climb STRAIGHT AHEAD to 1500', turn RIGHT to GORAN and hold.					
Alt Set: hPa and INCHES Rwy Elev: 0 hPa Trans level: FL 180 Trans alt: 17000' 1. IFR and VFR aircraft operations in excess of 250 KIAS below 10500' are not permitted within the Cayman Islands TMA and Owen Roberts CTR.					



Gnd speed-Kts	70	90	100	120	140	160	ODALS REIL PAPI 1500' RT GORAN	
Descent Gradient	5.2%	372	478	531	637	743		849
or Descent angle	[3.00°]							
MAP at VOR								

STRAIGHT-IN LANDING RWY 08				CIRCLE-TO-LAND			
MDA(H) A/B: 610' (602') C/D: 710' (702')				ODALS out			
A	1200m		1600m		Max Kts	MDA(H)	
B					100	610' (602') - 1600m	
C	3200m				135	710' (702') - 3200m	
D	3600m				180	710' (702') - 3600m	
					205	710' (702') - 3600m	

PANS OPS