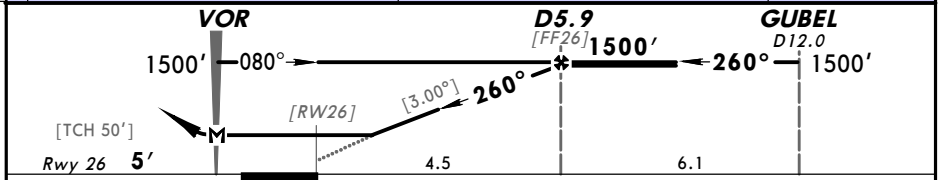
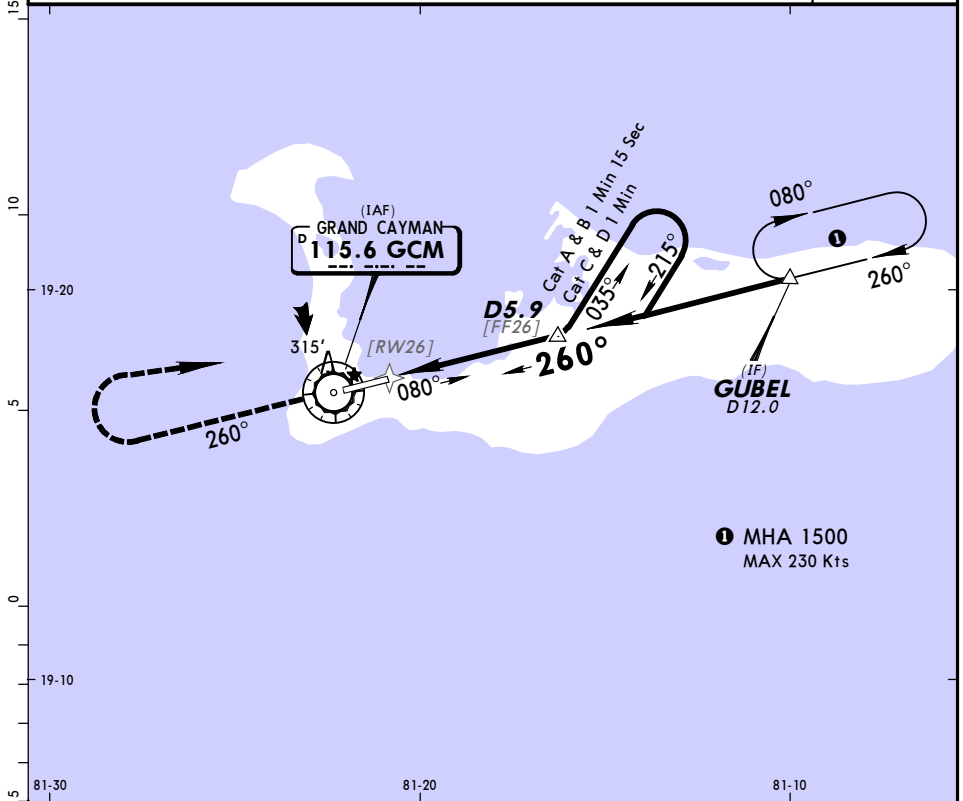


*ATIS 132.35		*GRAND CAYMAN Approach 120.2		*OWEN ROBERTS Tower 118.0	
VOR GCM 115.6	Final Apch Crs 260°	Minimum Alt D5.9 1500' (1495')	MDA(H) Refer to Minimums	Apt Elev 8' Rwy 26 5'	1400' MSA GCM VOR
MISSED APCH: Climb STRAIGHT AHEAD to 1500', turn RIGHT to GUBEL and hold.					
Alt Set: hPa and INCHES Rwy Elev: 0 hPa Trans level: FL 180 Trans alt: 17000' 1. IFR and VFR aircraft operations in excess of 250 KIAS below 10500' are not permitted within the Cayman Islands TMA and Owen Roberts CTR.					



Gnd speed-Kts	70	90	100	120	140	160	REIL	1500'	↑	RT	GUBEL
Descent Gradient or Descent angle	5.2%	372	478	531	637	849	PAPI-L				
MAP at VOR											

STRAIGHT-IN LANDING RWY 26						CIRCLE-TO-LAND					
MDA(H) A/B: 610'(602')						MDA(H)					
C/D: 710'(702')											
A	1600m					Max Kts	100				
B							135				
C	3200m						180				
D	3600m						205				
						710'(702') - 1600m					
						710'(702') - 3200m					
						710'(702') - 3600m					

PANS OPS